

PAREDES

- 1 PINTURA A GLEO CINZA
- 2 TAPETE
- 3 LIMBEI 10 CMS.
- 4 PINTURA A GLEO
- 5 PINTURA PLASTICA
- 6 MURAL DE ALUMINIO E VIDRO
- 7 COMBOZO
- 8 AZULEJO BRANCO
- 9 GRESSIT
- 10 CONCRETO APARENTE
- 11 MARMORE BRANCO

PISOS

- I GRANITO REITO
- II TAPETE PARKEX JACARANDA
- III TAPETE PARKEX REOBI
- IV CIMENTADO COM TAPETE
- V MARMORE CINZA
- VI CERAMICA CINZA
- VII CERAMICA CINZA E AZULEJO BRANCO DO PISO AO TETO
- VIII MADEIRA
- IX CIMENTADO
- X CONCRETO
- XI CIMENTADO COM JUNTA
- XII PEDRA PORTUGUESA

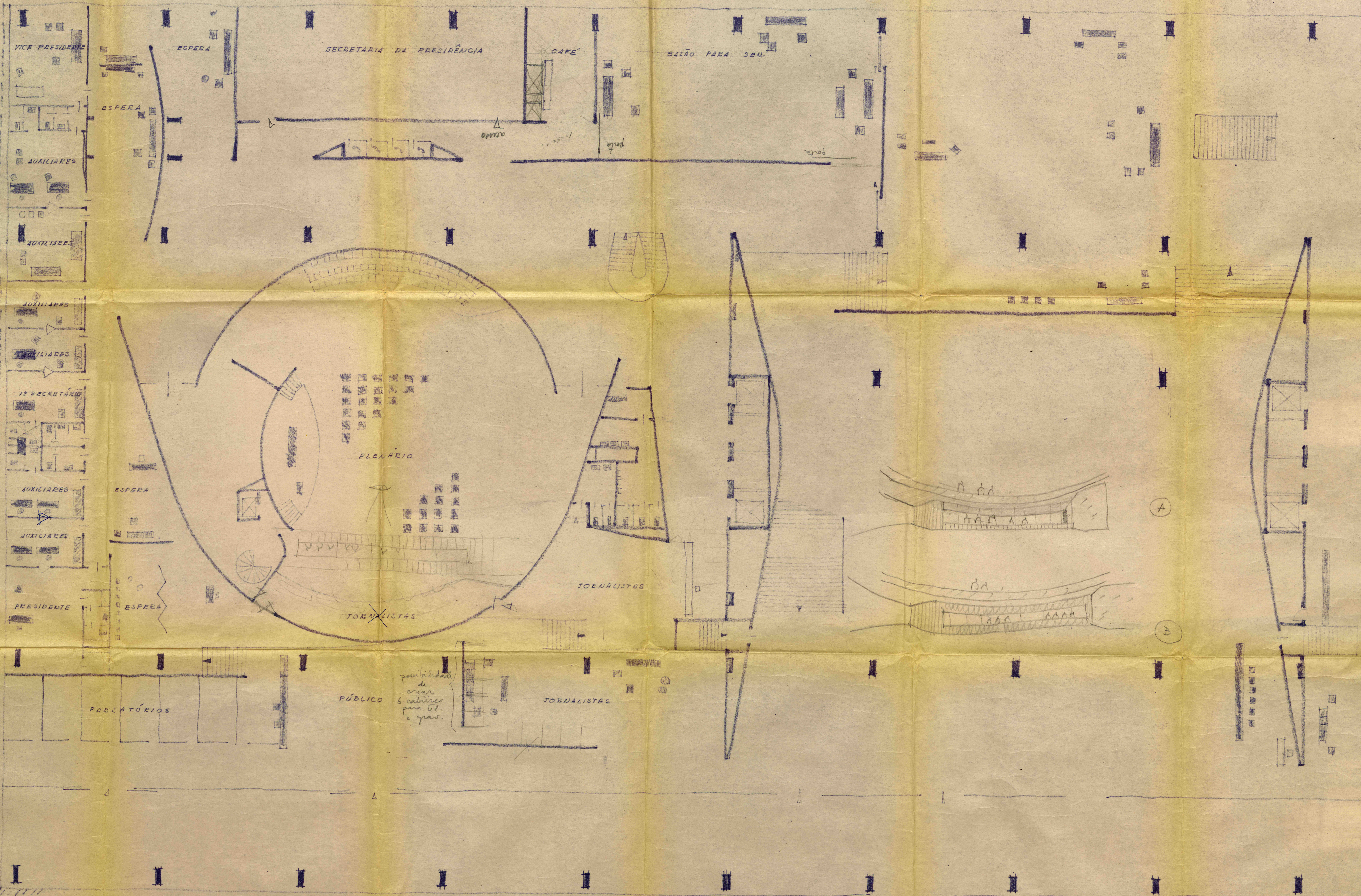
PEITORIS

- A PEITORIL CRILO (CHAPIM DE ALUMINIO)
- B GRADIL DE ALUMINIO
- C CHAPIM DE MARMORE

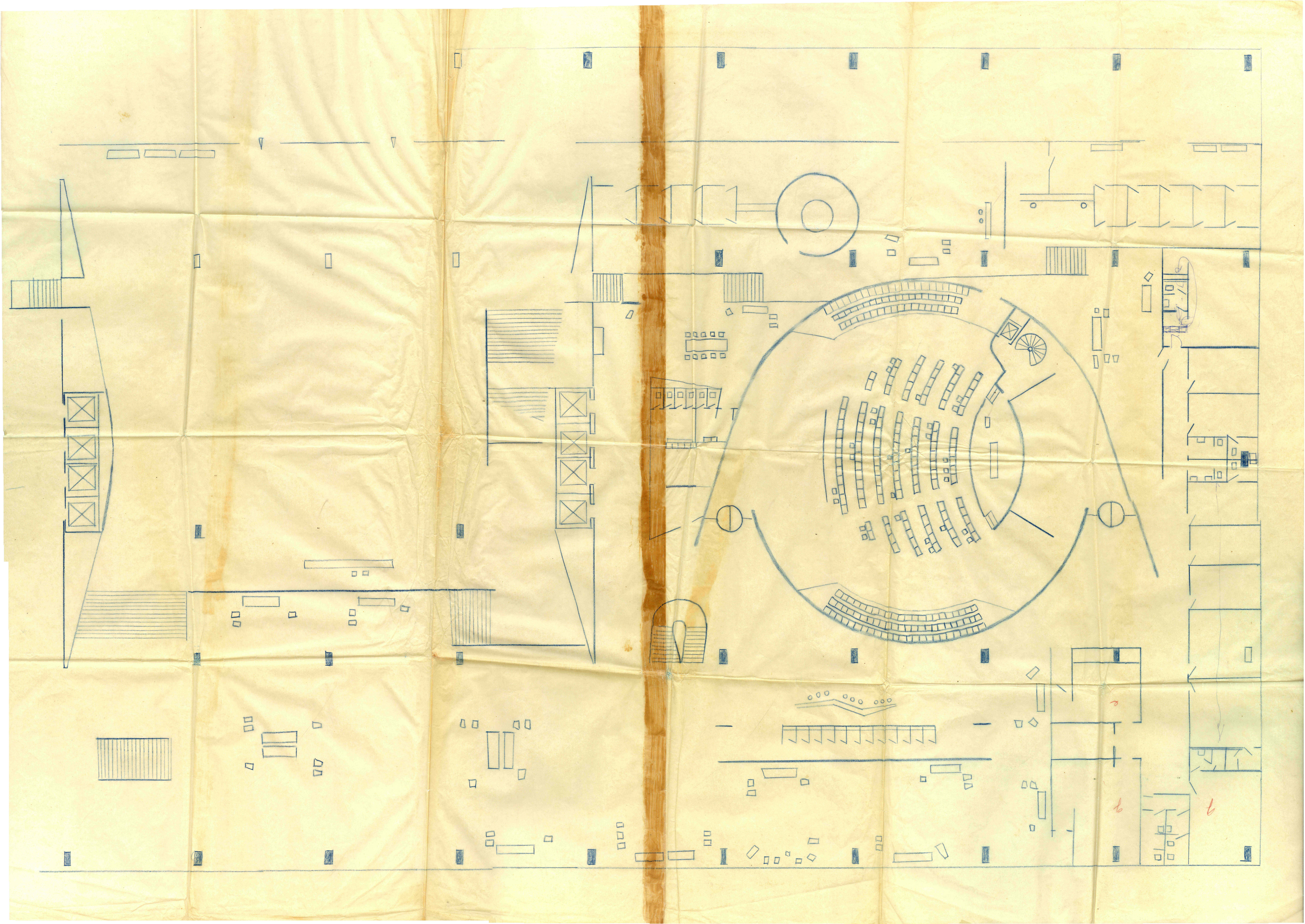
N. B. - ALTURAS P/ FORRO FALSO

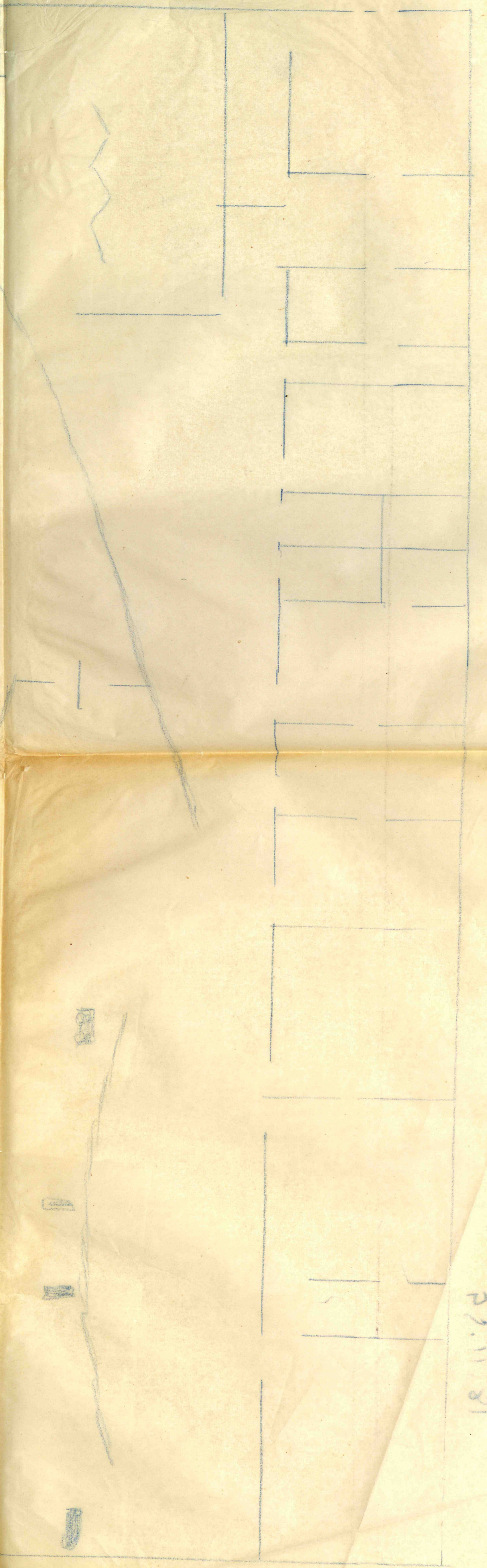
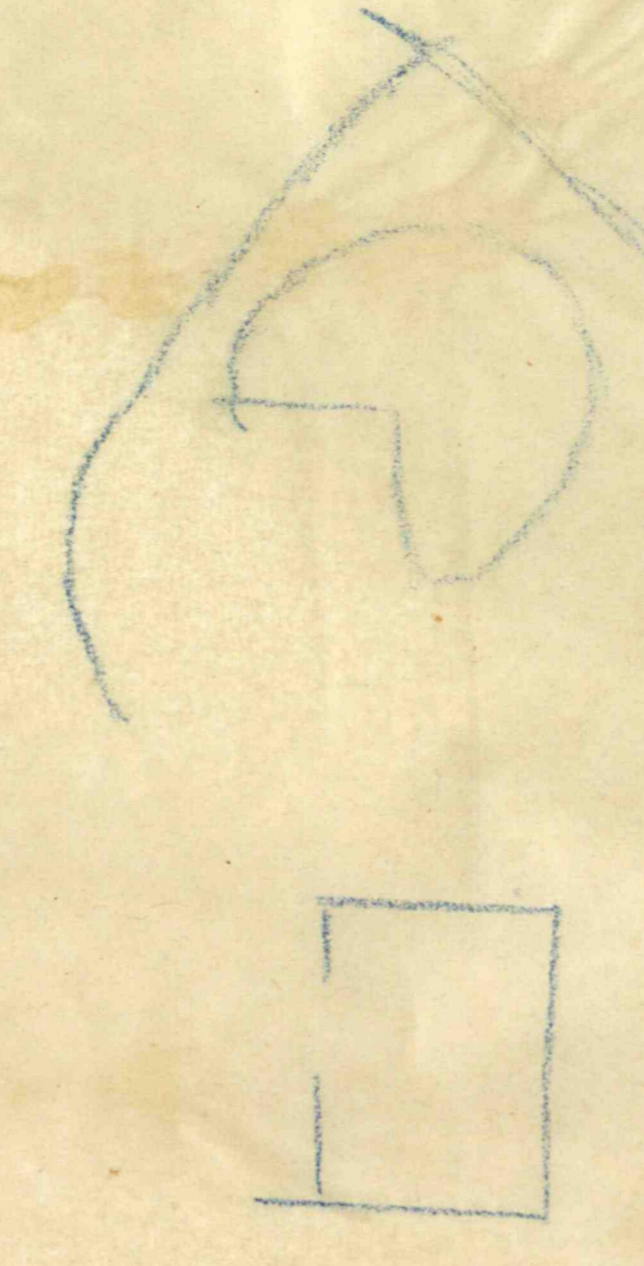
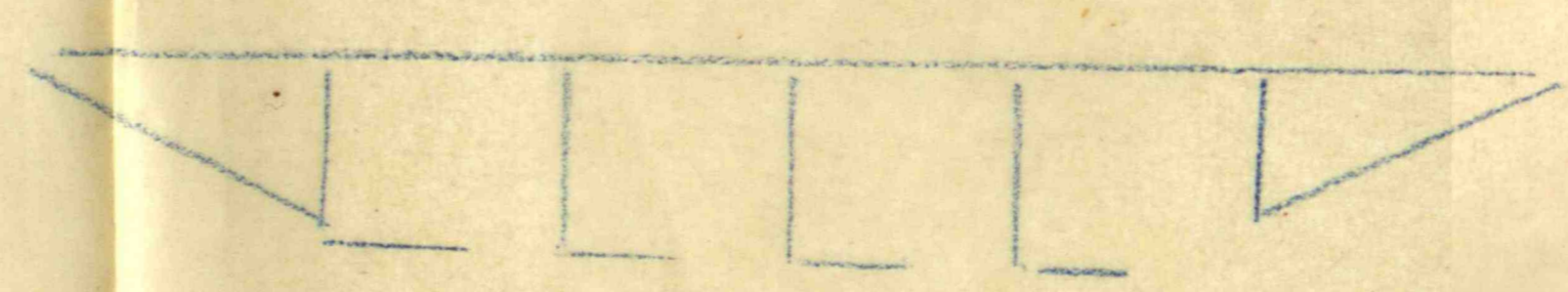
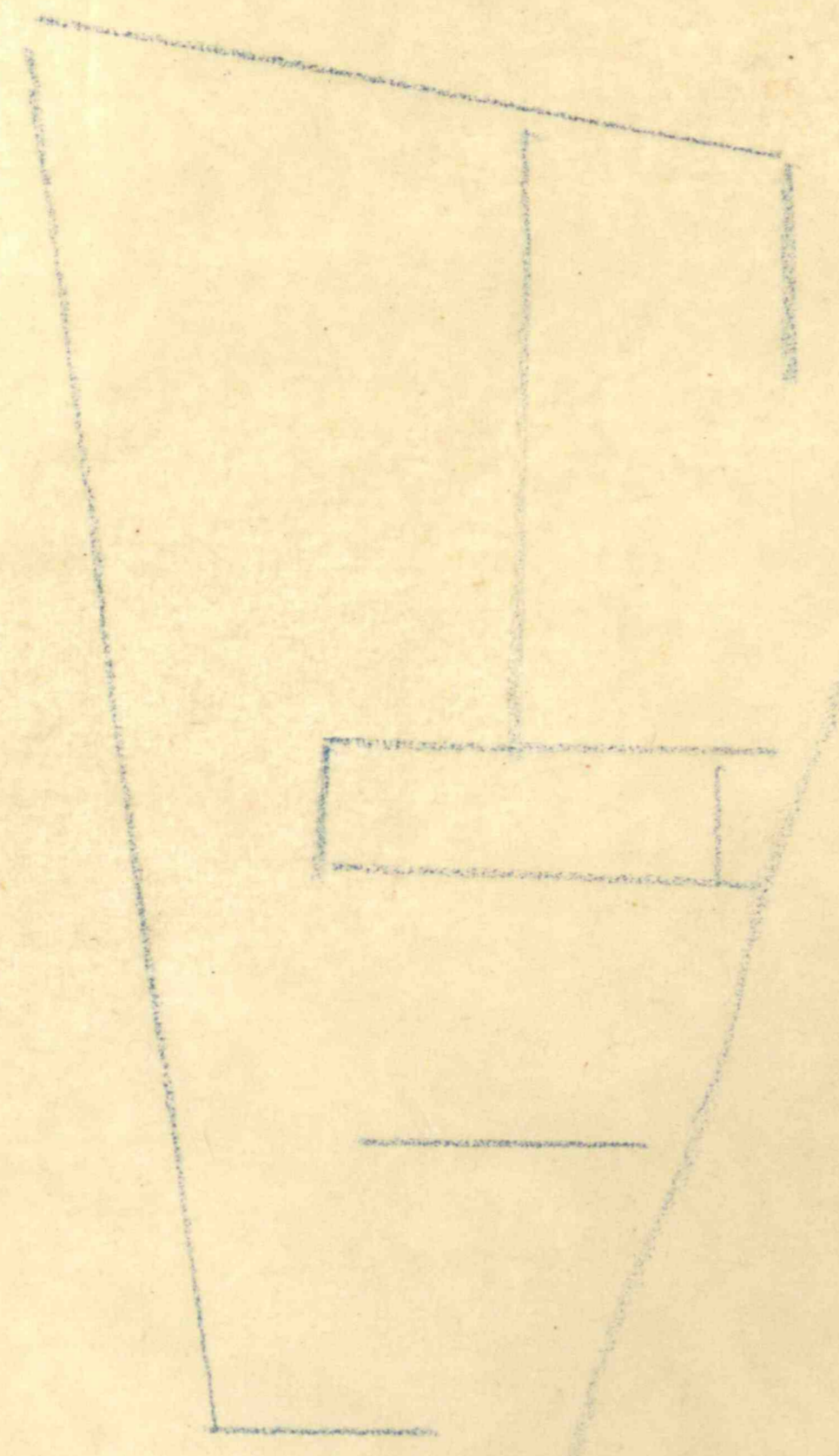
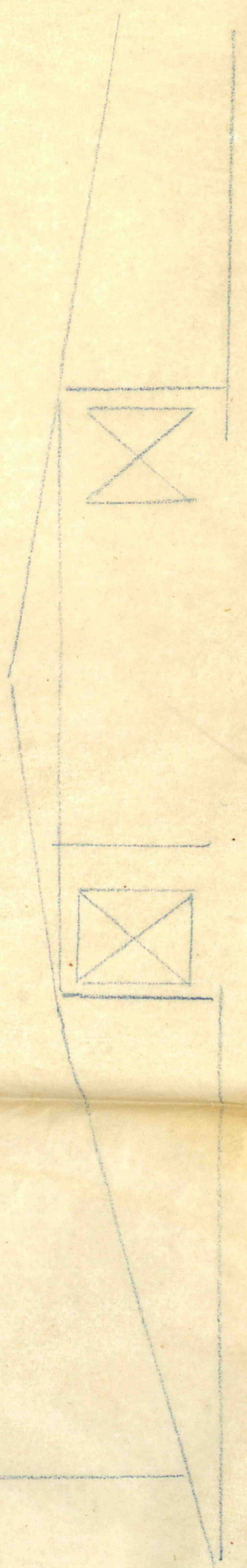
PE DIREITO LIVRE: 2,25

PE DIREITO LIVRE: 2,40



C.N. DEPARTAMENTO FEDERAL DE PARLAMENTARES





P.1.11.81